

EARTH DIGGER

1/14 SCALE EARTH DIGGER 360L HYDRAULIC EXCAVATOR (RTR/KIT)



www.rc4wd.com

Please locate your serial number now and record in the space provided.

1/14 Scale Earth Digger 360L Hydraulic Excavator (RTR/KIT)

Unit Information:

Serial Number: _____

Date Purchased: _____

Purchased From: _____

Please note that you will need to reference this information when inquiring about this unit. For questions, contact RC4WD at support@rc4wd.com.



CONTENTS

Introduction:

What's Included	page 3
Additional Parts Needed	page 3
Notes	page 4

Getting Started:

Oil Fill Up/Checking Oil	page 5
Power On	page 6
Functions with and without Oil Pump	page 7
Custom 8 Channel 2.4Ghz Radio	page 8

Excavator in Action:

Upper Arm Up/Down	page 9
Lower Arm Up/Down	page 9
Bucket Grab/Release	page 9
Turn Left/Right	page 10
Track Move Left/Right	page 10
Excavator Hydraulic System and Excavator Main Circuit System	page 11

Dimensions:

Excavator Dimensions	page 12
Cabin Dimensions	page 12
Track Dimensions	page 12
Maximum Height/Dig Depth	page 12

RC4WD 360L Hydraulic Excavator (RTR/KIT)



Introduction:

What's Included:

- 1x 1/12 Scale Earth Digger 360L Hydraulic Excavator without Batteries
- 1x Instruction Manual

Additional Parts Needed (RTR):

- Mobile DTE22 V22 Hydraulic Oil 16oz (Part # VVV-S0111)
- 3S 6500mAh 11.1v 25c Lipo (Part # Z-E0038)
- Metric Allen Wrench Tools

Additional Parts Needed (KIT):

- 3S 6500mAh 11.1v 25c Lipo (Part # Z-E0038)
- Mobile DTE22 V22 Hydraulic Oil 16oz (Part # VVV-S0111)
- Metric Allen Wrench Tools
- 3x Servos
- 3x Brushless ESCs



RC4WD 360L Hydraulic Excavator (RTR/KIT)



Notes:

This product is made for heavy duty usage. It has been designed to last and does not contain any plastic parts. However, electronics such as the hydraulic pump, hoses and electronics system can become worn over time and may need to be replaced. To minimize this, do not let the system overheat during usage. We offer all spare parts for sale.

The hydraulic pump and hoses are not covered under our 30 Day Limited Warranty as they are electronics, however we do guarantee that they are fully functional upon arrival. To ensure this, we complete two full multi-point inspections for each unit prior to shipping.

Every RTR unit is professionally assembled, adjusted and tested. Please do not adjust the oil pressure switch yourself. Oil pressure will drop as you operate over time.

This excavator is shipped without oil. You will be required to fill the tank yourself (See Page 5), by using a funnel or tube (not included).

If you have any question about this product, please contact us at support@rc4wd.com.



RC4WD 360L Hydraulic Excavator (RTR/KIT)



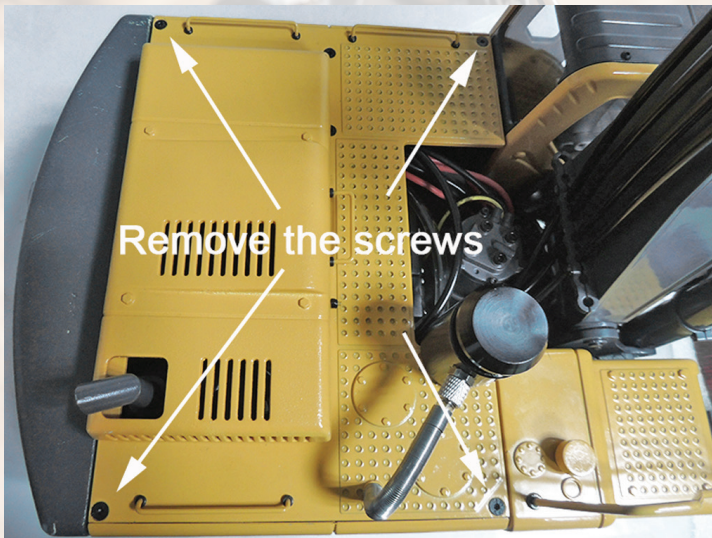
Getting Started:

Oil Fill Up/Checking Oil

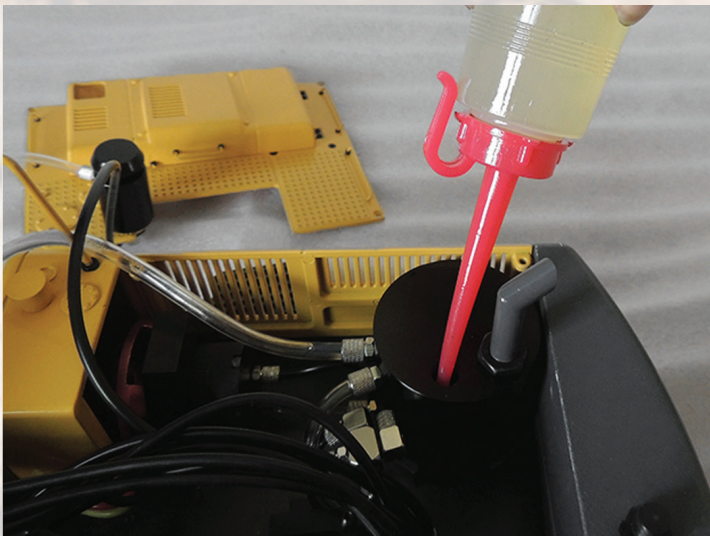
Before you begin, you will need to fill up the oil (Special, hydraulic oil only) first.

For example: Mobile DTE22 V22 Hydraulic Oil 16oz (Part # VVV-S0111).

First unscrew the 4x Flat Head Socket Cap Screws and remove (You will need a 2.0 Metric Hex Driver).



Open the tank with a Flat Head Screwdriver.



Once the tank is open, you may begin to fill up the oil. We recommend using a toothpick or something similar to gauge the oil level. For the first oil fill, add less than 150ml of oil and let the excavator run for a while. Then proceed to add an additional 80ml of oil. Close the tank immediately after.

RC4WD 360L Hydraulic Excavator (RTR/KIT)



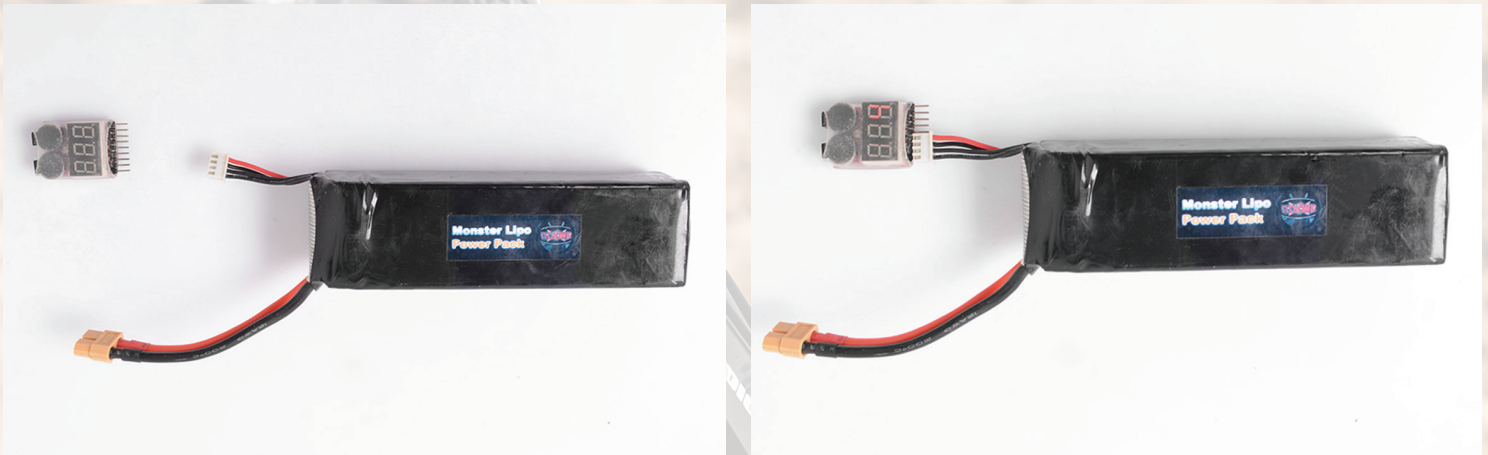
Power On:

We recommend you use the following battery:

3S 6500mAh 11.1v 25c Lipo (Part # Z-E0038)

We were able to achieve an average of 30 minutes with a mix of “Digger and Drive”.

Please use a LiPo Battery Low Voltage Alarm since the ESC does not include an alarm. If you choose to, you may place the battery behind the cabin and affix with Velcro.



RC4WD 360L Hydraulic Excavator (RTR/KIT)



Functions with and without the Oil Pump

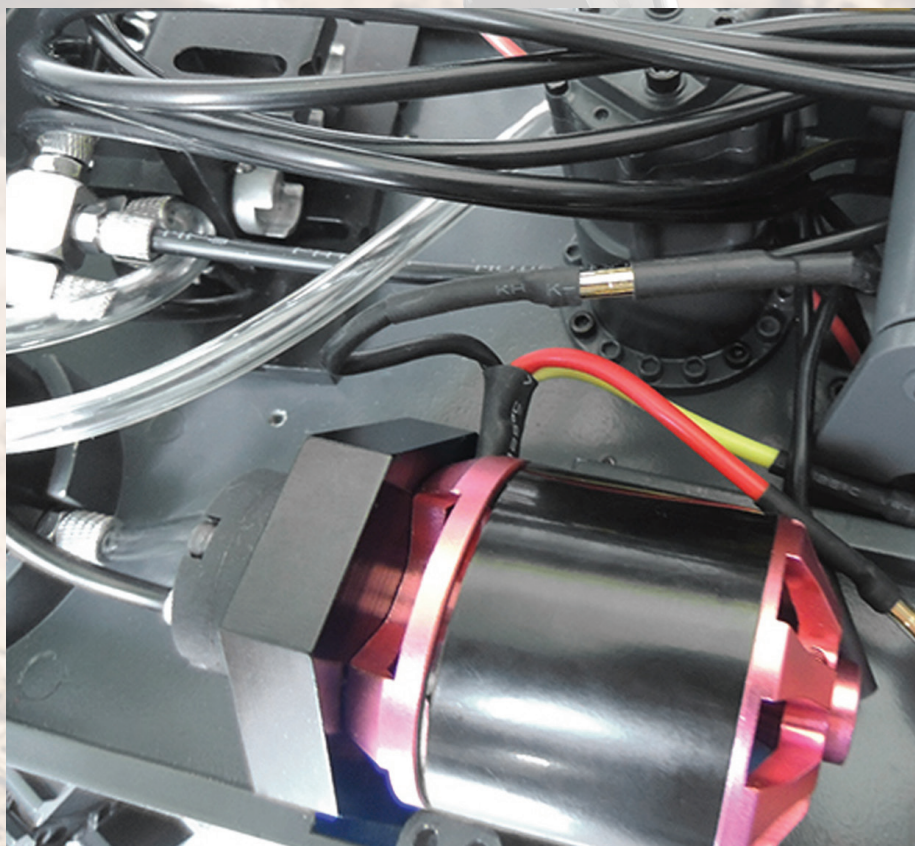
Before placing the battery into the system, please ensure all switches are in the zero position. You can read more about this on Page 8 - Custom 9 Channel 2.4G Hz Radio.

Functions when oil pump is off: Only the tracks and turntable will work.

Functions when oil pump is on: All hydraulic functions should work normally (see Page 8).



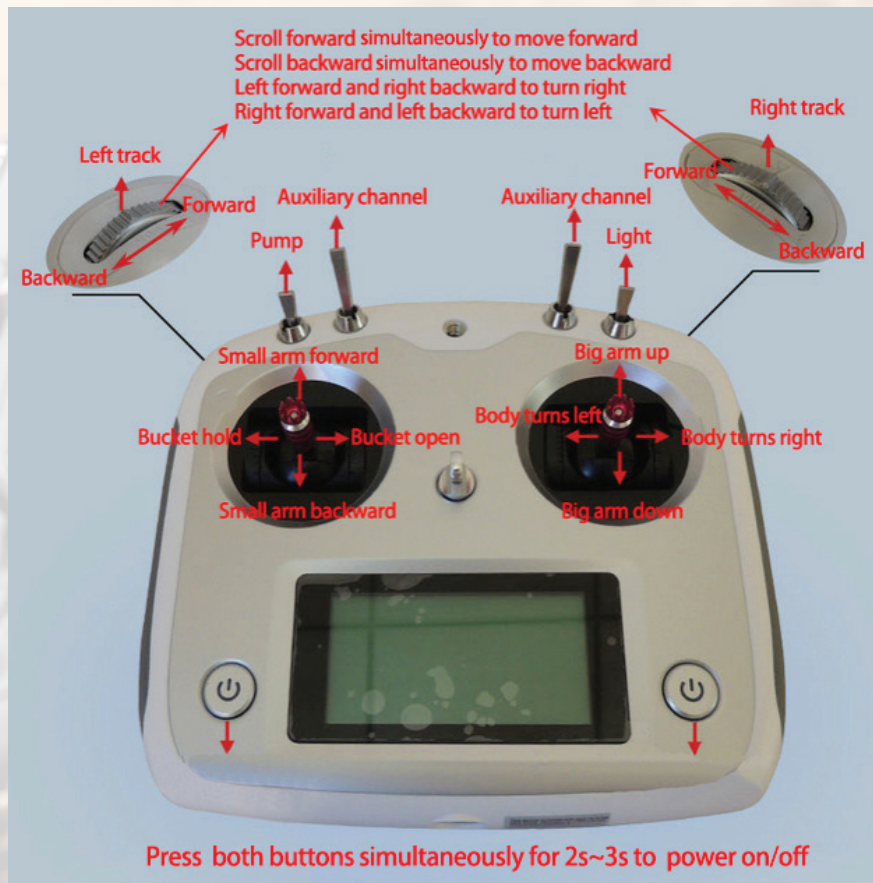
After switching the oil pump on, the motor should turn.



RC4WD 360L Hydraulic Excavator (RTR/KIT)



The Custom 12 Channel 2.4G Hz Radio.



Important Note: All switches must be kept in the up position while turning on the radio. Otherwise, there will be a continuous warning sound.

Before using the radio, you must insert 8 AA batteries (not included). You may also use Lipos.

Short Instructions:

Upper Arm Up/Down
Lower Arm Up/Down
Bucket Grab/Release
Turn Left/Right
Track Move Left/Right/Both

RC4WD 360L Hydraulic Excavator (RTR/KIT)



Excavator in Action:

Upper arm up/down and combine with other functions.



Lower arm up/down and combine with other functions.



Bucket grab/release and combine with other functions.



RC4WD 360L Hydraulic Excavator (RTR/KIT)

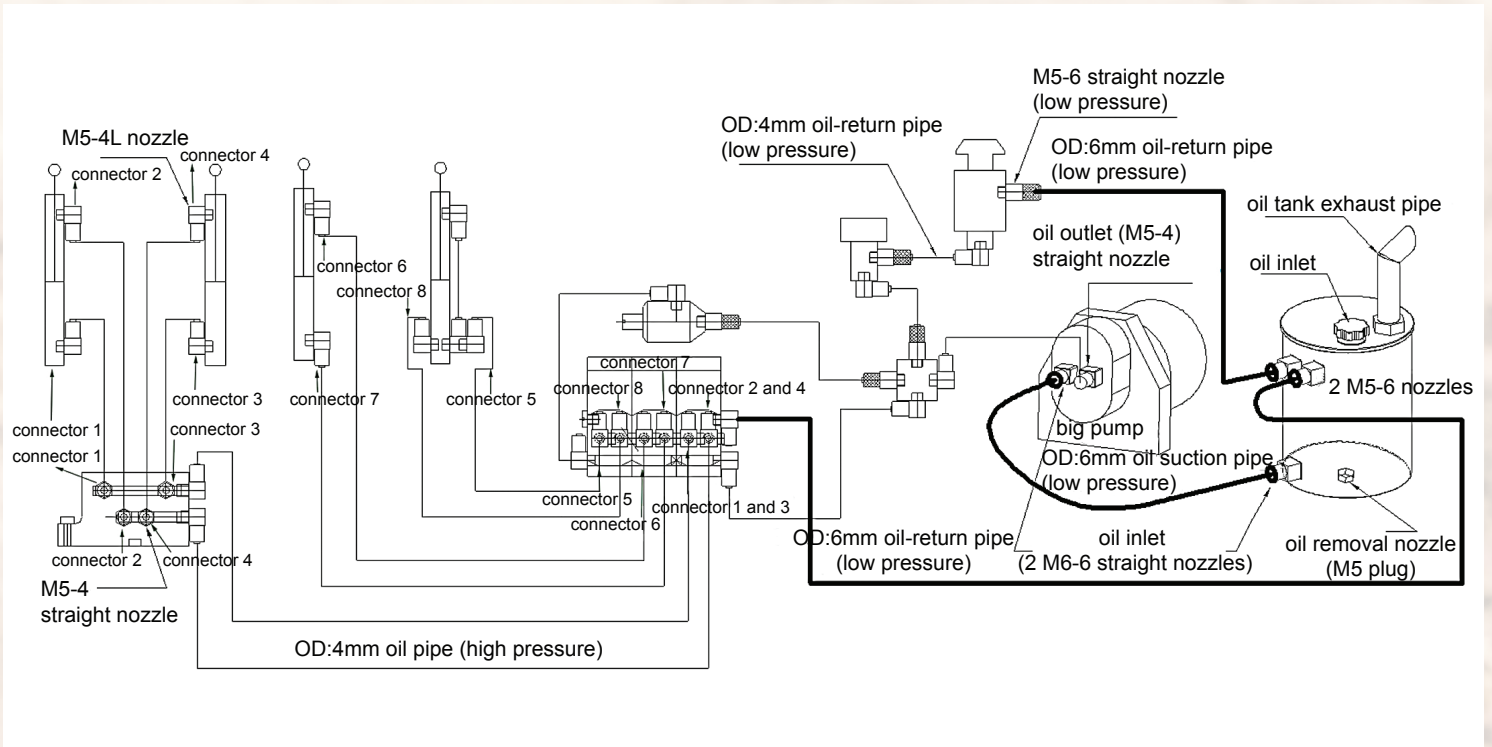


The Earth Digger 360L Hydraulic Excavator is the most powerful excavator available today, created for the customer who requires reliability and high production in bulk earth moving and/or construction projects. It contains CNC machined metal parts, comes fully assembled and is ready to dig! You may turn the turntable completely around and turn the excavator on the spot.

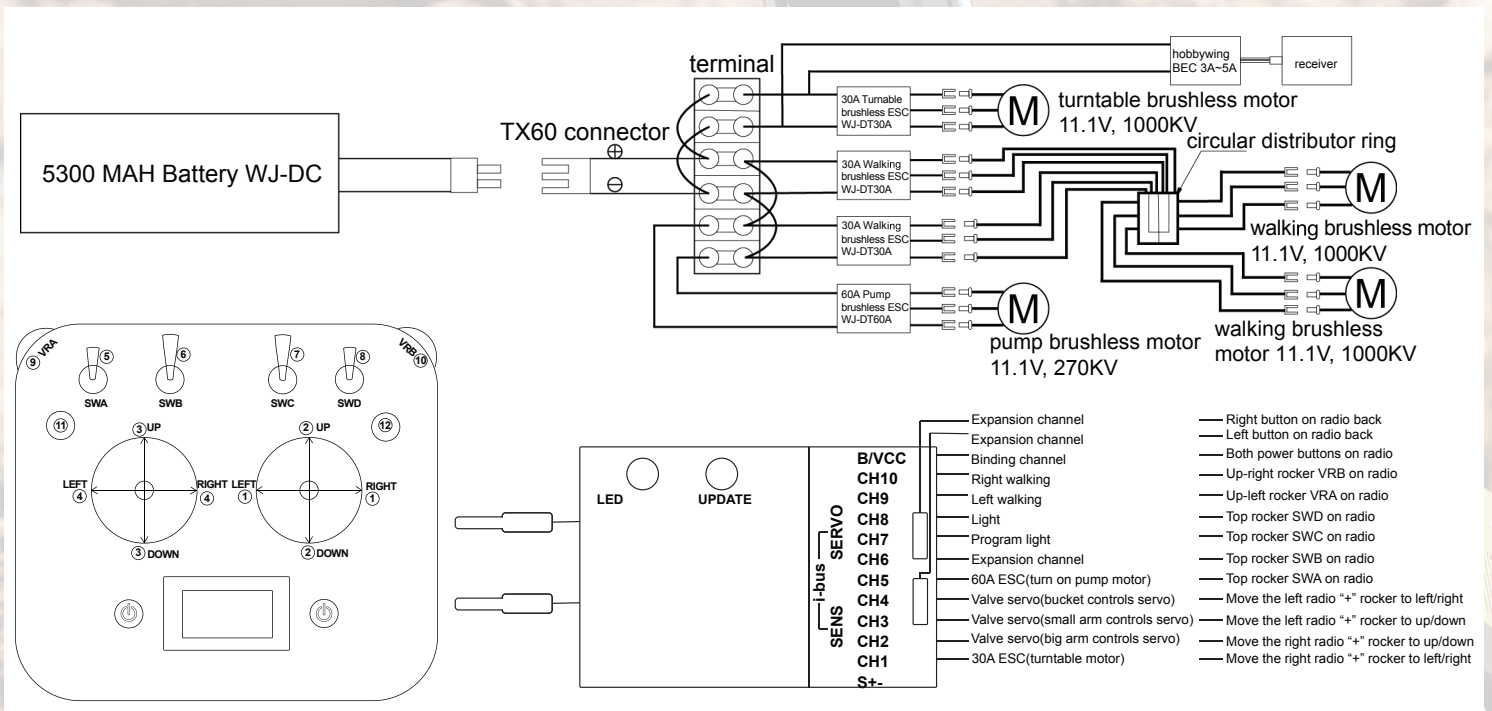




Excavator Hydraulic System



Excavator Main Circuit System





Excavator Dimensions

Shortest Length: 827mm

Longest Length: 1115mm

From the bottom to top of the Cabin: 395mm

Width over the Turntable: 231mm

Length over the Turntable: 130mm

Cabin Dimensions

Height: 107mm

Length: 120mm

Width: 65mm

Track Dimensions

Track Full Length: 376mm

Track Full Width: 250mm

Track Full Height: 80mm

Single Track Width: 50mm

Maximum Height and Dig Depth

Maximum Height: 833mm

Maximum Dig Depth: 516mm

Weight without Battery: 26kg



www.rc4wd.com



RC4WD

**618 Blossom Hill Rd. Ste 201
San Jose, CA 95123**

Web: www.RC4WD.com - Email: support@rc4wd.com